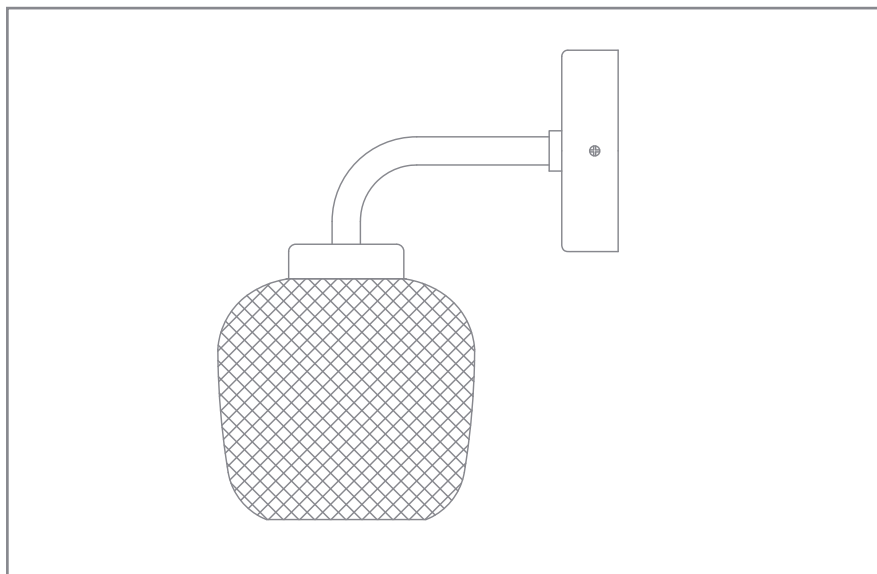


OLIVER BONAS

LUCE WALL LIGHT

We hope you love your purchase, however if you aren't completely happy please retain your packaging to ensure its safe return.

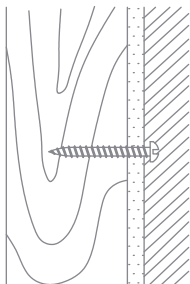


Wall fixings are not included.

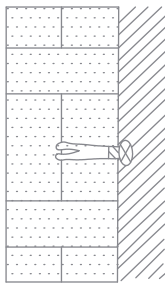
Always remember that wall fixings should be selected according to the type of wall and weight of item to be hung.

We recommend seeking professional advice before selecting fixings.

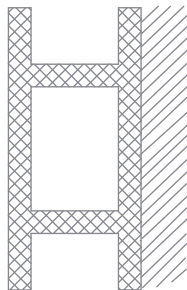
Check fittings are secure before use.



Wood

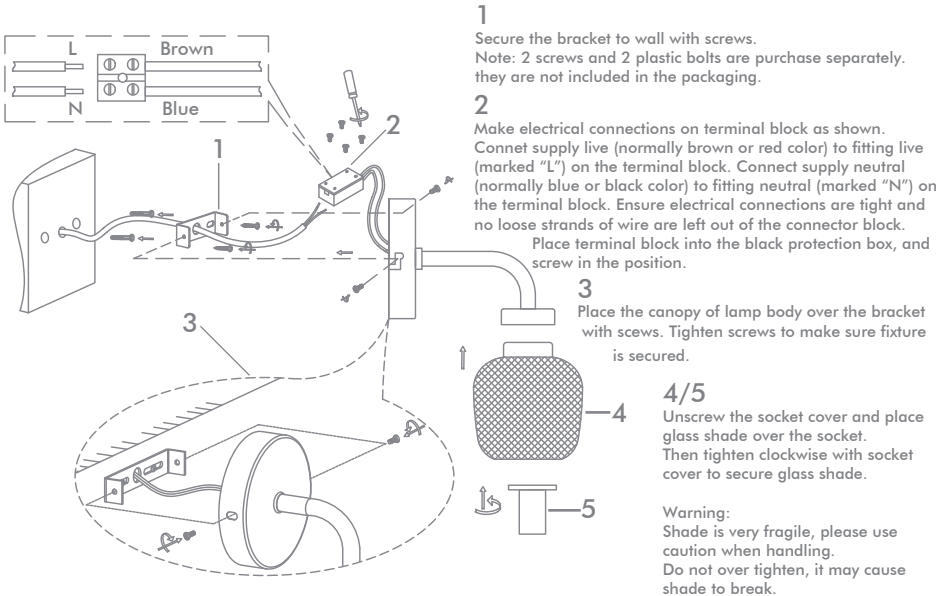


Brick



Cavity (Special fittings needed)

OLIVER BONAS



Lighting Care Guide

If the external flexible cable or cord of this light is damaged, it should be exclusively replaced by the manufacturer or a similar qualified person in order to avoid a hazard.

IMPORTANT INSTRUCTIONS

The bulb 40W E14 /ES is not included.
We recommend our 3W LED bulb

Not suitable for children
Not suitable for outdoor use
Not suitable for bathrooms.

Please refrain from moving the lamp by the cord.
Before replacing the bulb please ensure it has been unplugged from the mains.
Always wait for the bulb to cool before removing.

Ensure the lamp is on a level surface.
If the electrical cord is damaged, please do not use.

Do not exceed the recommended wattage: 40W

WARNING!

Do not drag the lamp as this may scratch surfaces.

CLEANING

Take care of your piece by wiping with a dry cloth and avoiding abrasive cleaners and water.

Retain this information for reference.

Oliver Bonas
Unit F, Davis Road Industrial Park
Chessington KT9 1TQ

Oliver Bonas Ireland Ltd
The Black Church St Mary's Place
Dublin 7 Republic of Ireland